

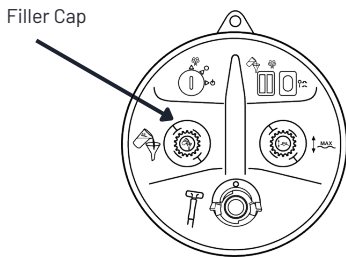
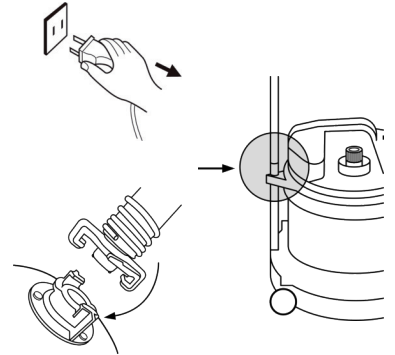
REGULAR MAINTENANCE CHECKLIST

Maintaining your Steamer

To ensure a long and trouble free life of your steamer it is essential that it is flushed through with clean water every 2 to 4 weeks to avoid the buildup of sediment and limescale. It is a simple procedure which takes approximately 10 minutes.

1. CLEANING OUT STEAMER

- Do not unplug the steamer by pulling the electric cord, always **switch off at the socket then firmly grip plug and pull out of socket.**
- Allow the water in the steamer to cool down before proceeding to the next step.
- Remove hose assembly and pole set.
- Empty steamer through the hose outlet into a ground level drain or bucket (preferably, do not lift into a sink).
- Fill with fresh water, swill and flush out. Repeat until water comes clean.
- Clean steamer with damp cloth and mop up any water spillage.

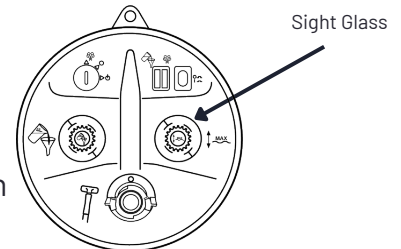


2. REMOVE FILLER CAP

- Shake to ensure the steel ball rattles and is loose. If it does not, **do not use your steamer.** Contact your Head Office or our Freephone 0508 243 629.
- Ensure that the filler cap is located on the correct coupling with matching icon.

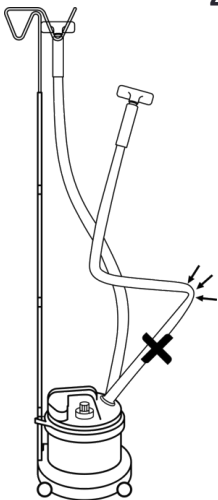
3. REMOVE SIGHT GLASS CAP

- Wipe inside of the sight glass.
- Replace cap onto the float chamber.
- Ensure that the sight glass is located on the correct coupling with matching icon.



4. CHECK HOSE AND ELECTRICAL CORD

- Run hand alongside the hose to ensure that there is no permanent kink or twist.
 - Check power cord. Ensure no wires are showing, no twist or apparent damage.
- If in doubt, do not use your steamer.** Contact your Head Office or our Freephone 0508 243 629.



5. REASSEMBLE POLE SET AND HOSE

- Refit pole to steamer.
- Attach hose to the hose outlet coupling by aligning the ears then pushing and twisting the hose end clockwise on the coupling until it locks in to position.

NOTE: Every few months, descale your steamer with the Propress descaler. Place your order via our [website](http://www.propress.co.nz) or through our Freephone 0508 243 629



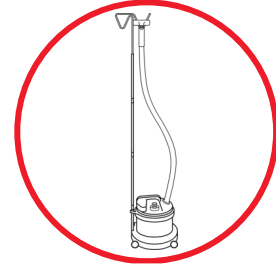
TO BE USED BY AUTHORISED PERSONNEL ONLY

! CAUTION: STEAM CAN BURN

ALWAYS USE IN A SAFE PLACE

1

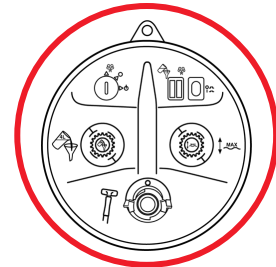
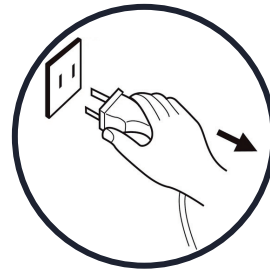
- Use in a well ventilated area
- Ensure floor is level and area is free of clutter
- No trailing cable
- Away from walkways and children
- Away from smoke detectors



FILL WITH TAP WATER ONLY

2

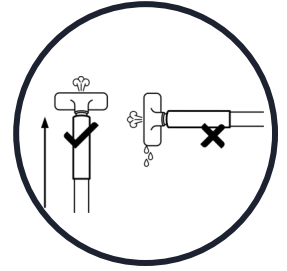
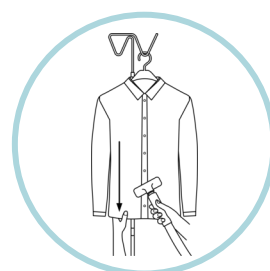
- Turn power off
- Disconnect power supply
- Use funnel
- Do not overfill
- Ensure filler cap is fitted to water inlet before switching on
- Mop up spillages before connecting power supply



USING THE STEAMER

3

- Do not steam clothes on yourself or others
- Keep holes in nozzle pointing upwards
- Do not tilt or carry machine while in use
- Never leave steaming machine unattended
- Never leave hose on the floor
- Only refill when warning light indicates empty
- Do not twist or kink hose



SWITCH OFF IF STEAM ESCAPES FROM FILLER CAP AND CONSULT INSTRUCTION MANUAL

